



## Certificate of Analysis

R&D

**Client Information:**

**DELTA ALTERNATIVES**  
502 E MAIN ST STE A  
ROGUE RIVER, OR 97537

Batch # DA-D8 11-12-24  
Batch Date: 2024-11-12  
Extracted From: Hemp

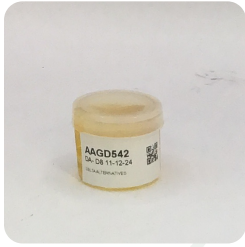
Test Reg State: Oregon

Production Facility: Delta Alternatives  
Production Date: 2024-11-12

Order # DEL241115-050001  
Order Date: 2024-11-15  
Sample # AAGD542

Sampling Date: 2024-11-21  
Lab Batch Date: 2024-11-21  
Completion Date: 2024-11-26

Initial Gross Weight: 11.800 g



Product Image

Potency  
Tested

**Delta 8/Delta 10 Potency 13 - (LCUV)**

Specimen Weight: 505.000 mg

SOP13.001 (LCUV)

**Tested**

Analyte	LOD (%)	LOQ (%)	Result (mg/g)	Result (%)
Delta-8 THC	2.60E-5	0.015	918.460	91.846
Delta6a10a-THC	8.47E-5	0.015	1.200	0.120
CBC	1.80E-5	0.015	<LOQ	<LOQ
CBD	5.40E-5	0.015	<LOQ	<LOQ
CBDA	1.00E-5	0.015	<LOQ	<LOQ
CBDV	6.50E-5	0.015	<LOQ	<LOQ
CBG	2.48E-4	0.015	<LOQ	<LOQ
CBGA	8.00E-5	0.015	<LOQ	<LOQ
CBN	1.40E-5	0.015	<LOQ	<LOQ
Delta-10 THC	3.00E-6	0.015	<LOQ	<LOQ
Delta-9 THC	1.30E-5	0.015	<LOQ	<LOQ
THCA-A	3.20E-5	0.015	<LOQ	<LOQ
THCV	7.00E-6	0.015	<LOQ	<LOQ
Total Active CBD			<LOQ	<LOQ
Total Active THC			<LOQ	<LOQ

**Potency Summary**

<b>Total Delta 8</b> 91.846%	-	<b>Total Delta 10</b> None Detected
<b>Total Active THC</b> None Detected	-	<b>Total Active CBD</b> None Detected
<b>Total CBG</b> None Detected	-	<b>Total CBN</b> None Detected
<b>Total Cannabinoids</b> 91.966%		

Aixia Sun Lab Director/Principal Scientist  
D.H.Sc., M.Sc., B.Sc., MT (AAB)



Definitions and Abbreviations used in this report: Total Active CBD = CBD + (CBD-A \* 0.877), \*Total CBDV = CBDV + (CBDVA \* 0.867), Total Active THC = THCA-A \* 0.877 + Delta 9 THC, Total THC = THC + (THCVA \* 0.87), CBG Total = (CBGA \* 0.878) + CBG, CBN Total = (CBNA \* 0.876) + CBN, Total CBC = CBC + (CBCA \* 0.877), Total THC-O-Acetate = Delta 8 THC-O-Acetate + Delta 9 THC-O-Acetate, Total THCP = Delta8-THCP + Delta9-THCP, Total Cannabinoids = Total percentage of cannabinoids within the sample. (mg/ml) = Milligrams per Milliliter, LOQ = Limit of Quantitation, LOD = Limit of Detection, Dilution = Dilution Factor, (ppb) = Parts per Billion, (%) = Percent, (cfu/g) = Colony Forming Unit per Gram, (µg/g) = Microgram per Gram, (ppm) = Parts per Million, (ppm) = (µg/g), (aw) = Water Activity, (mg/Kg) = Milligram per Kilogram. ACS uses simple acceptance criteria. Passed - Analyte/microbe is not detected or is at the level below the action limit per OR rule OAR 333-007-0390, OAR 333-007-0400. Failed - Analyte/microbe is at the level that equal or above the action limit per OR rule OAR 333-007-0390, OAR 333-007-0400 Sample not received via laboratory sampling.  
This report shall not be reproduced, without written approval, from ACS Laboratory. The results of this report relate only to the material or product analyzed. Test results are confidential unless explicitly waived otherwise. ACS Laboratory is accredited to the ISO/IEC 17025:2017 Standard.